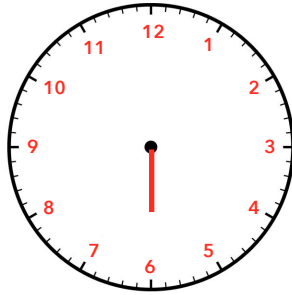


Nous sommes le matin, indique l'heure sous chaque horloge.



\_\_\_ h



\_\_\_ h

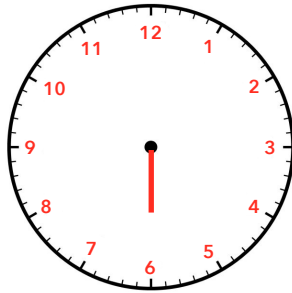


\_\_\_ h

Nous sommes l'après-midi, indique l'heure sous chaque horloge.



\_\_\_ h

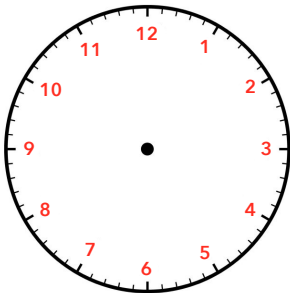


\_\_\_ h

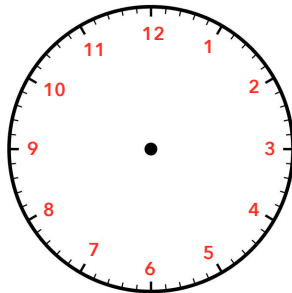


\_\_\_ h

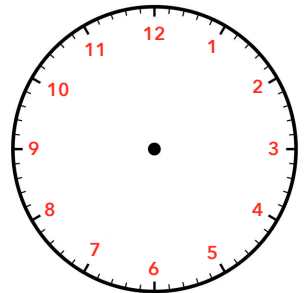
Nous sommes le matin, dessine l'aiguille des heures sur chaque horloge.



4 h

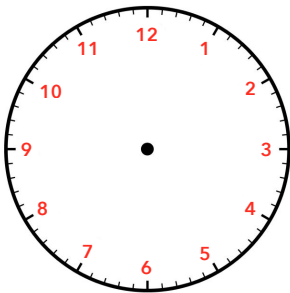


9 h

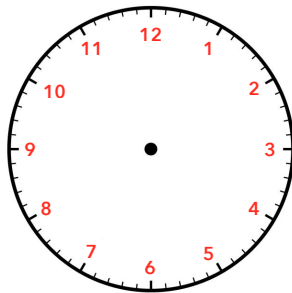


0 h

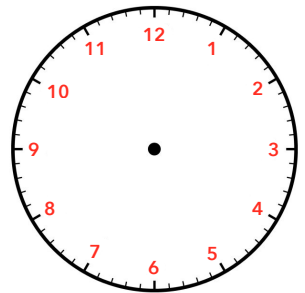
Nous sommes l'après-midi, dessine l'aiguille des heures sur chaque horloge.



13 h



17 h

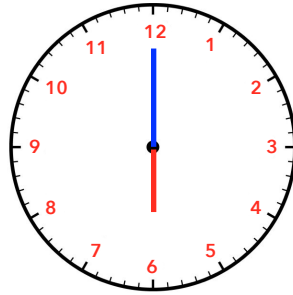


21 h

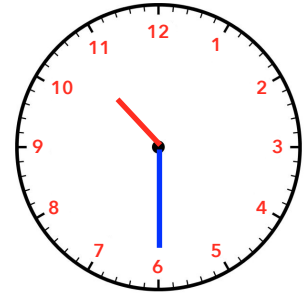
Nous sommes le matin, indique l'heure sous chaque horloge.



\_\_\_ h \_\_\_ min



\_\_\_ h \_\_\_ min

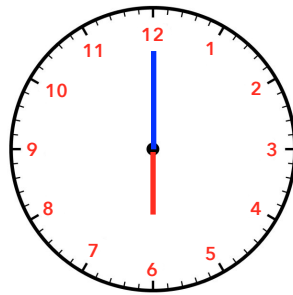


\_\_\_ h \_\_\_ min

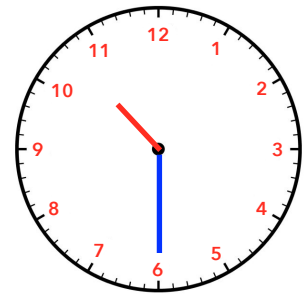
Nous sommes l'après-midi, indique l'heure sous chaque horloge.



\_\_\_ h \_\_\_ min

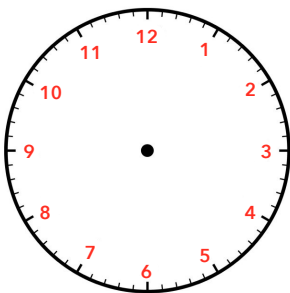


\_\_\_ h \_\_\_ min

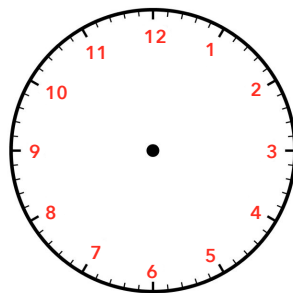


\_\_\_ h \_\_\_ min

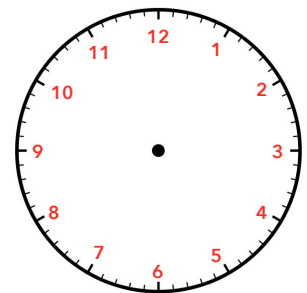
Nous sommes le matin, dessine l'aiguille des heures et celle des minutes sur chaque horloge.



04 h 00 min

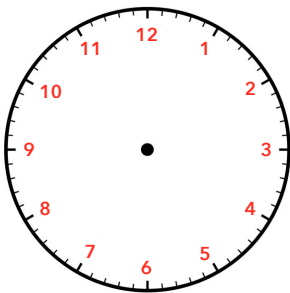


08 h 15 min

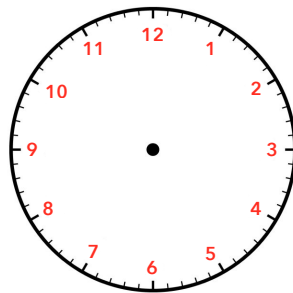


10 h 05 min

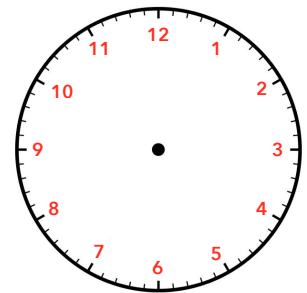
Nous sommes l'après-midi, dessine l'aiguille des heures et celle des minutes sur chaque horloge.



16 h 30 min

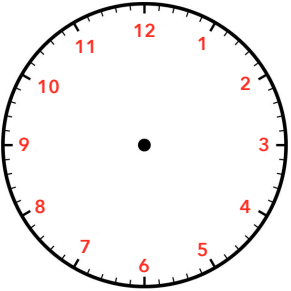
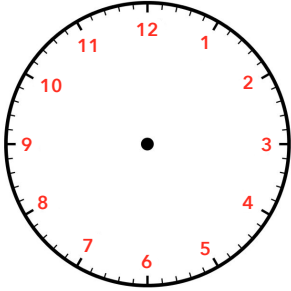


20 h 20 min



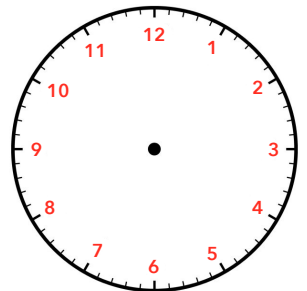
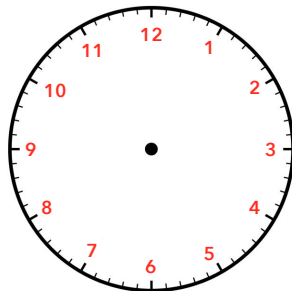
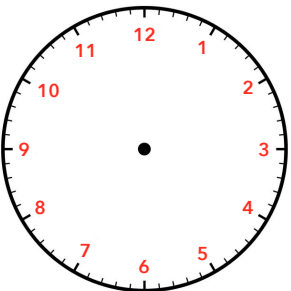
13 h 10 min

Relie chaque horloge à deux étiquettes.



- 9 heures et quart
- 9 heures et demie
- 9 heures moins le quart
- 09 h 30 min
- 09 h 15 min
- 08 h 45 min

Dessine l'aiguille des heures et celle des minutes sur chaque horloge .

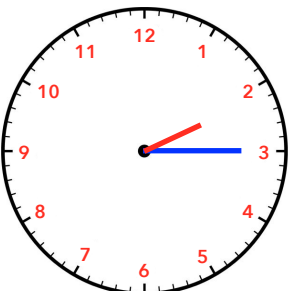


2 heures et demie

8 heures et quart

5 heures moins le quart

Complète les heures indiquées.



2 heures .....

9 heures .....

4 heures .....